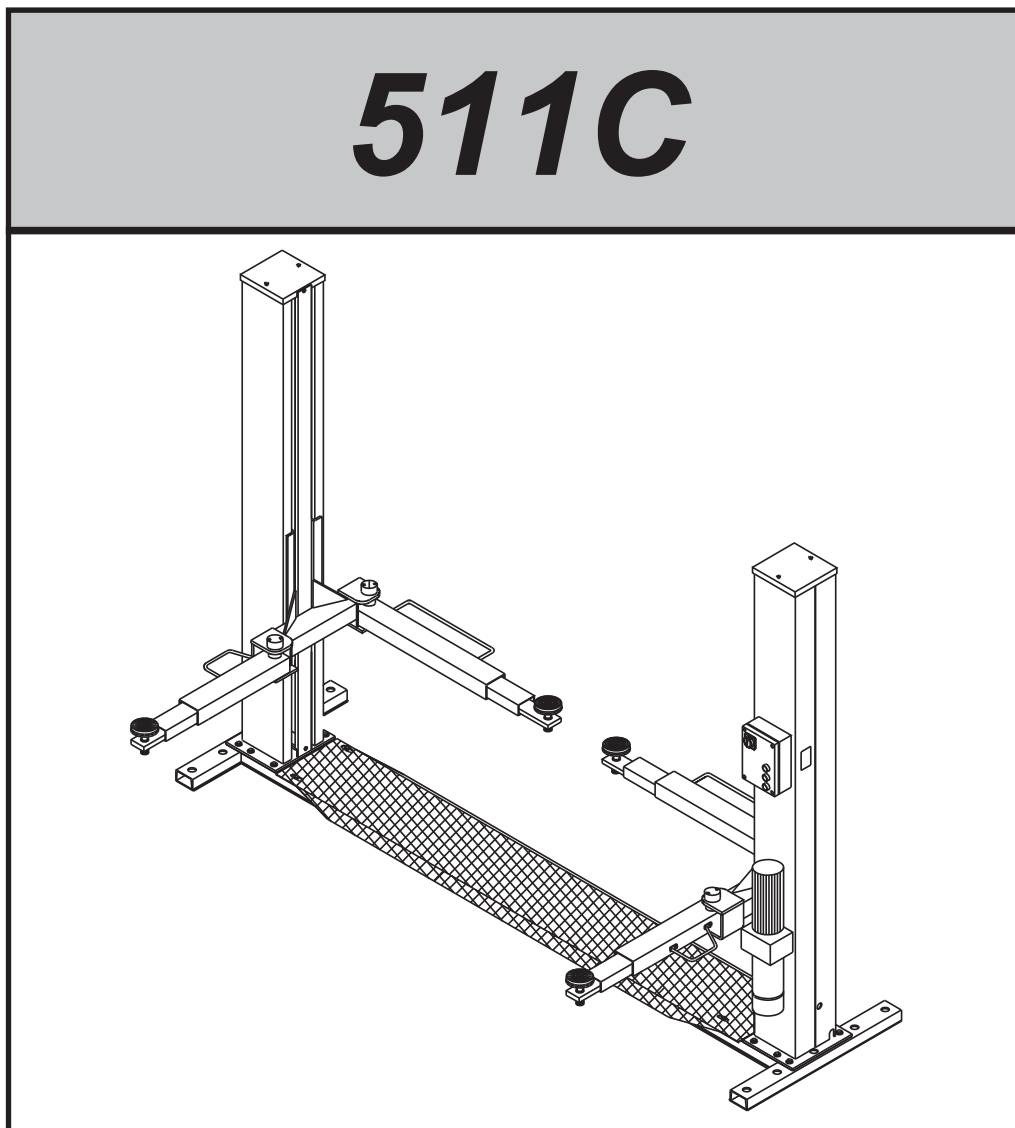


OMA

CE

511C



I

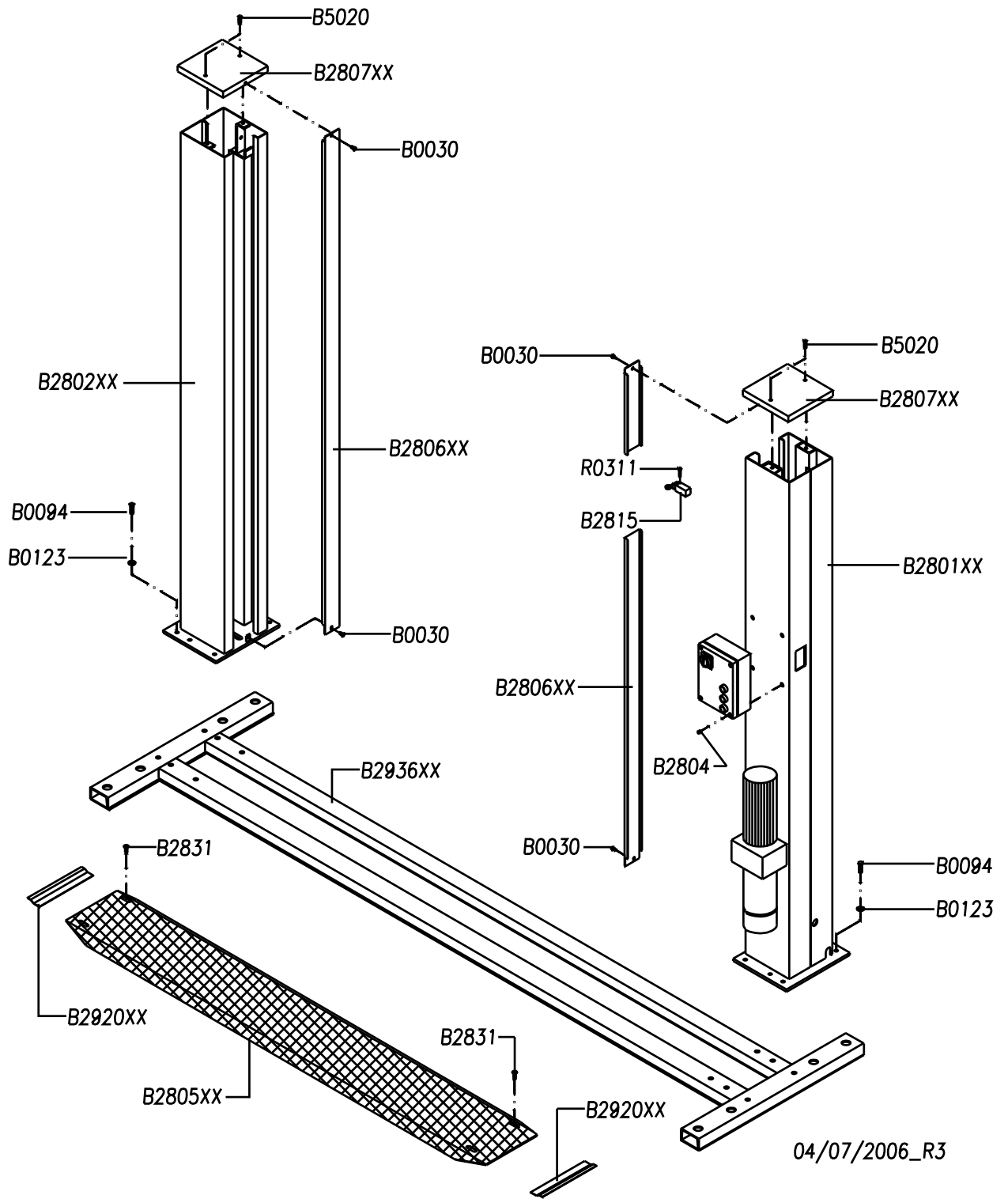
GB

**SOLLEVATORE
ELETTROIDRAULICO A
2 COLONNE**

**2-POST
ELECTRO-HYDRAULIC
LIFT**

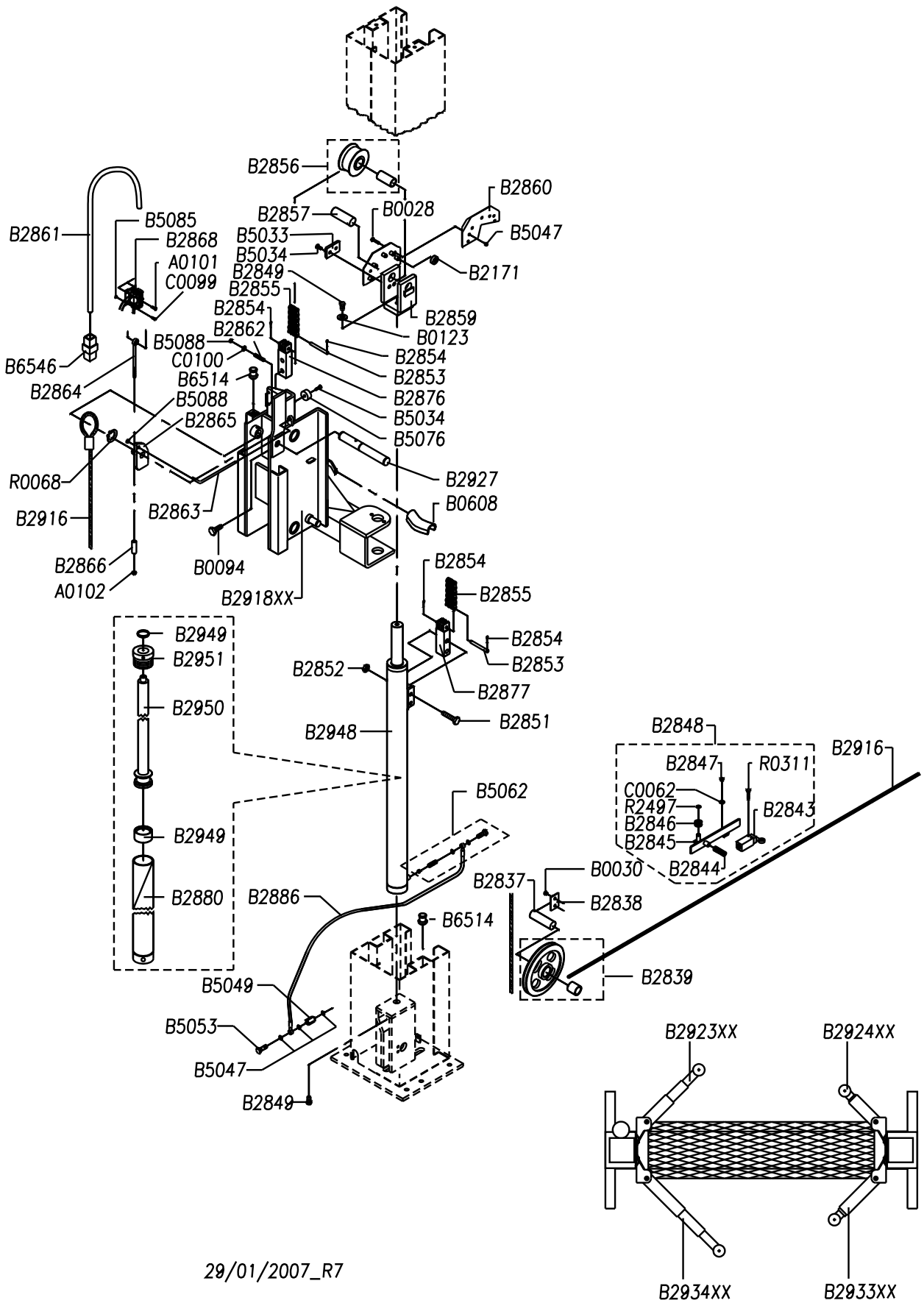
COLONNE

POSTS

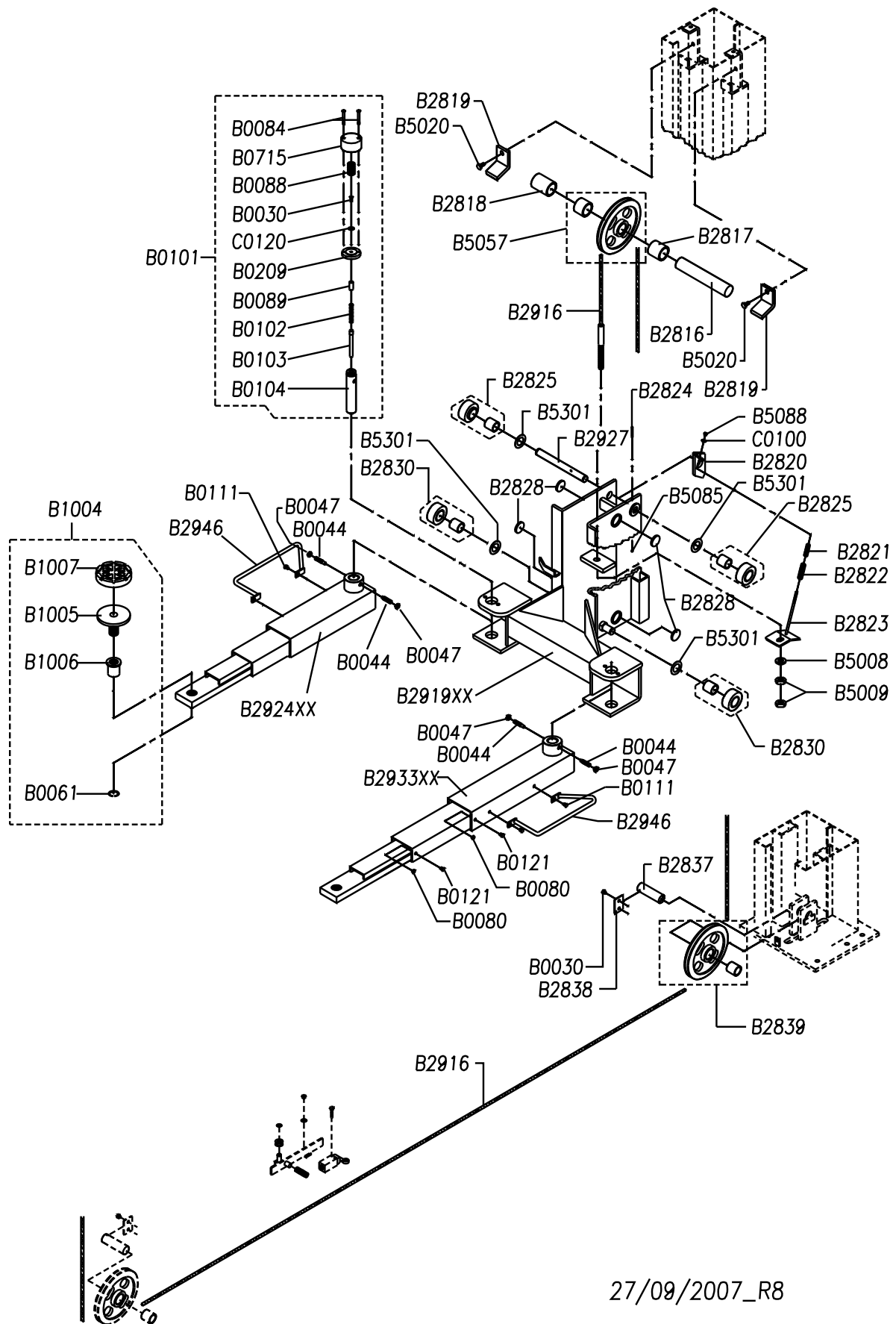


CARRELLI E BRACCI LATO COMANDO

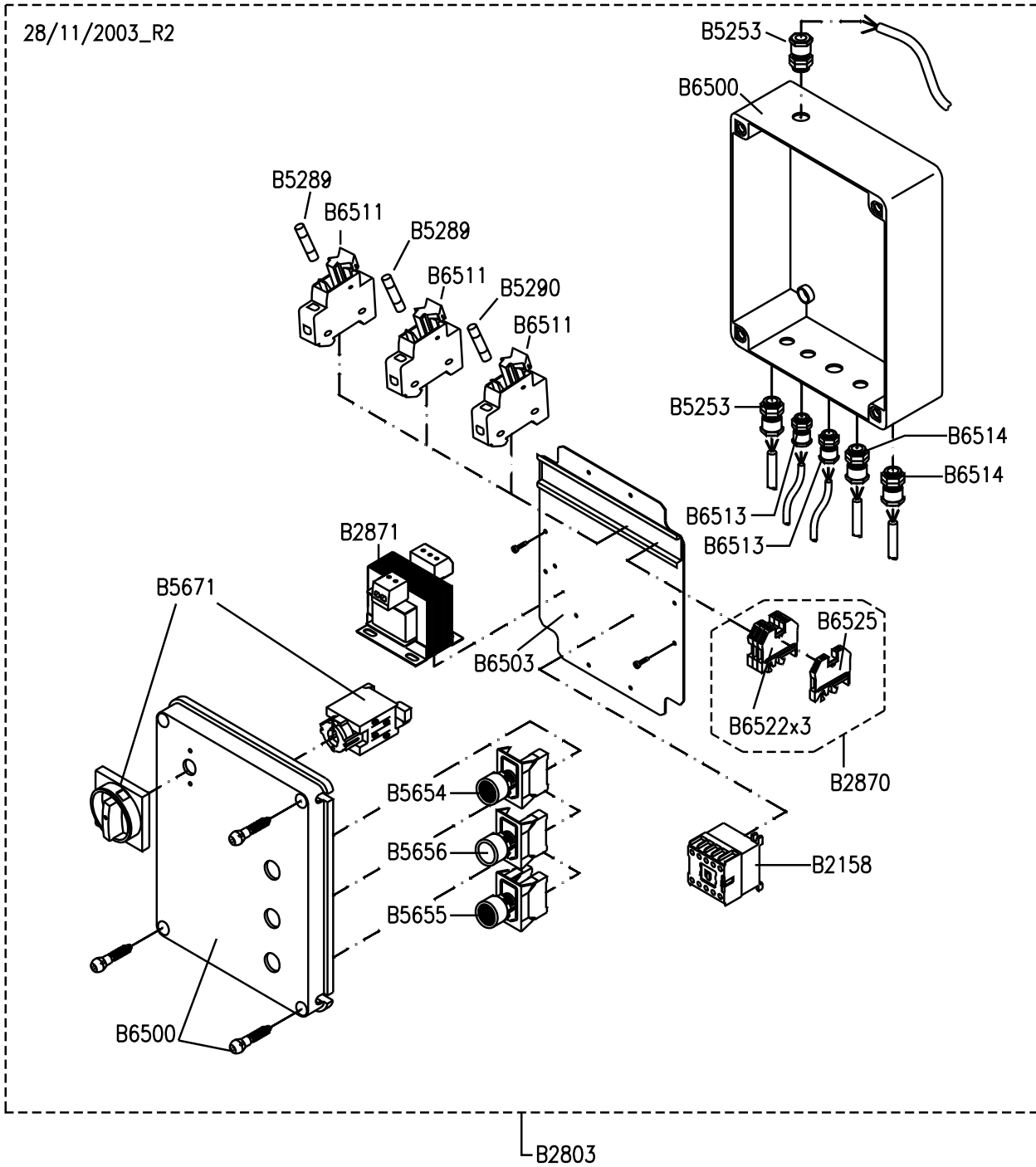
COMMAND SIDE CARRIAGES AND ARMS

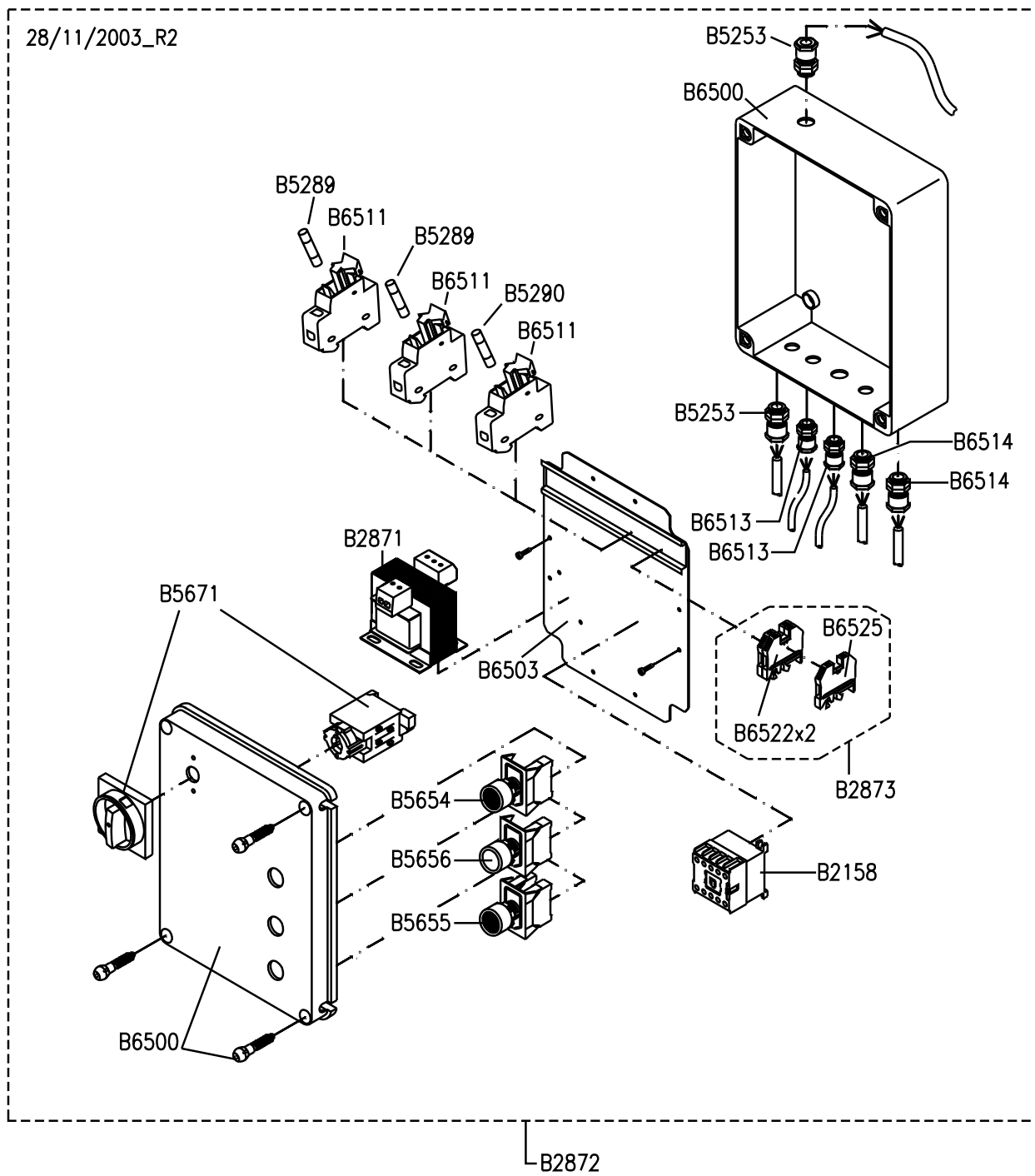


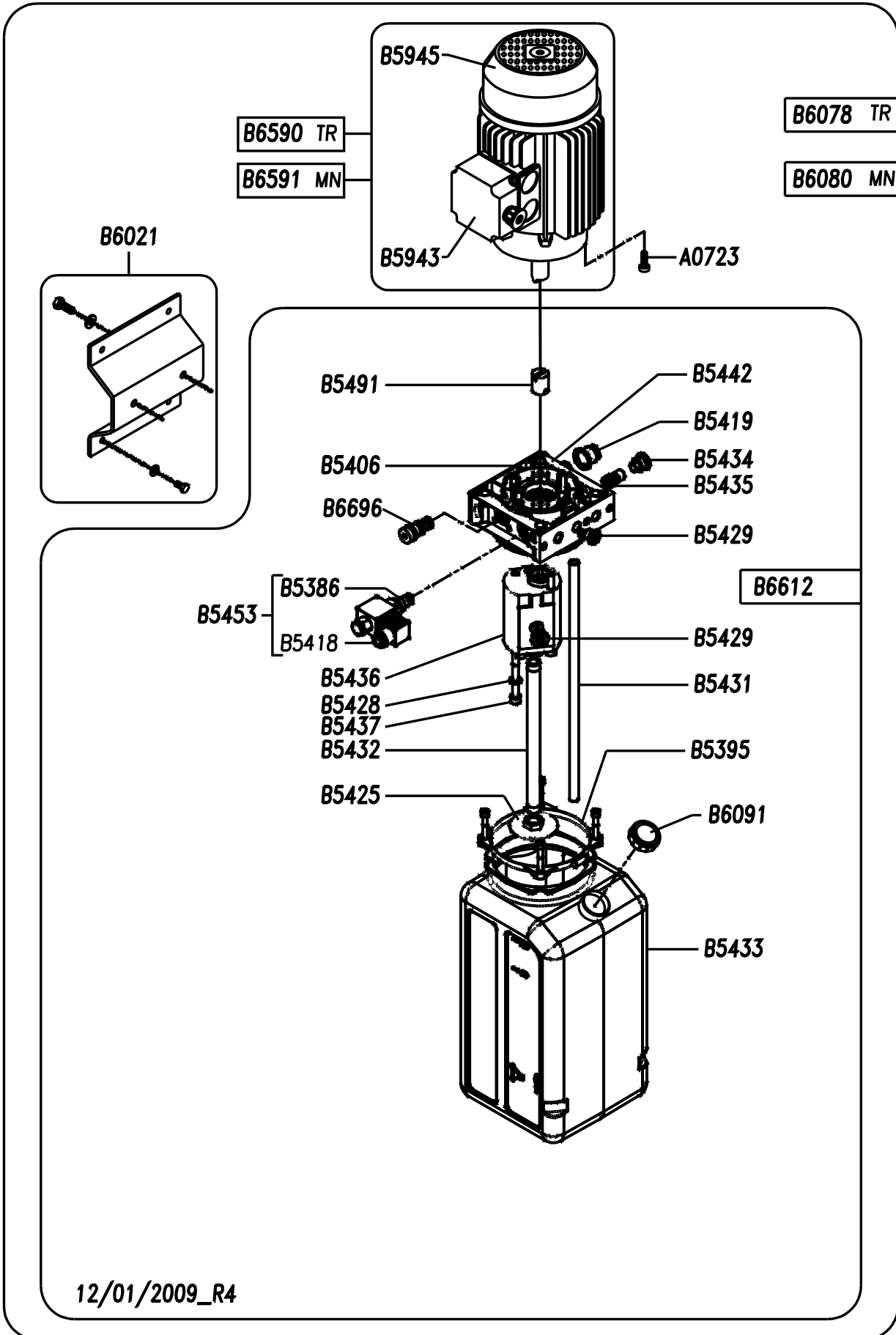
29/01/2007_R7



27/09/2007_R8







Code	Cons.	Descrizione	Description
A0101		VITE TE M5X10 UNI 5739	SCREW TE M5X10 UNI 5739
A0102		DADOBLK ALTO M6 UNI 7473 ZB	ZINC PLATED HIGH NUT M6
A0723		VITE TCEI M8X20 UNI 5931	SCREW TCEI M8X20 UNI 5931
B0028		VITE TE M10X30 UNI 5739	SCREW TE M10X30 UNI 5739
B0030		VITE TE M8X16 UNI 5739	SCREW TE M8X16 UNI 5739
B0044		VITE TSPEI M14X40 UNI 5925	SCREW TSPEI M14X40 UNI 5925
B0047		DADO M14 UNI 5589	NUT M14 UNI 5589
B0061		ANELLO A26 UNI 7433	RING A26 UNI 7433
B0080		DADO M10 UNI 5589	NUT M10 UNI 5589
B0084		VITE TE M10X53	SCREW TE M10X53
B0088		MOLLA Ø30 BLOCCAGGIO BRACCI	BLOCKING ARMS Ø30 SPRING
B0089		PERNO GUIDA RONDELLA CORTO	WASHER GUIDE SHORT PIN
B0094		VITE TE M16X40 UNI 5739	SCREW TE M16X40 UNI 5739
B0101		KIT DISPOSITIVO BLOCCAGGIO BRACCI	ARM LOCKING DEVICE KIT
B0102		MOLLA Ø15 BLOCCAGGIO BRACCI	BLOCKING ARMS Ø15 SPRING
B0103		PERNO SPINGIMOLLA	SPRING THRUSTING PIN
B0104		SPINA DENTATA BLOCCAGGIO BRACCI	BLOCKING ARMS DOWEL PIN
B0111		VITE TE M10X10 UNI 5739	SCREW TE M10X10 UNI 5739
B0121		VITE TE M10X12 UNI 5739	SCREW TE M10X12 UNI 5739
B0123		RONDELLA P. Ø17X30X4 UNI 1734	WASHER Ø17X30X3 UNI 6592
B0209		RONDELLA CALETTATA	KEY WASHER
B0608		PARAURTI CARRELLO	CARRIAGE BUMPER
B0715		CAPPELLOTTO BLOCCAGGIO BRACCI	ARMS LOCKING CAP
B1004		PIATTELLO COMPLETO	DISK ASSEMBLY
B1005		PIATTELLO PORTADISCO	PAD HOLDING PLATE
B1006		BUSSOLA PIATTELLO	PLATE BUSH
B1007	*	DISCO IN GOMMA	RUBBER DISK
B2158	*	TELERUTTORE 24V 50/60Hz	CONTACTOR 24V 50/60Hz
B2171		RONDELLA Ø35x12	WASHER Ø35x12
B2801XX		COLONNA L.C.	COMAND POST
B2802XX		COLONNA L.O.	FREE POST
B2803		QUADRO COMANDI COMPLETO TRIFASE	ELECTRIC BOX ASSEMBLY THREE-PHASE
B2804		VITE TCEI M8X10 UNI 5931	SCREW TCEI M8X10 UNI 5931
B2805XX		PEDANA COPERTURA BASAMENTO	BASEMENT COVERING BOARD
B2806XX		CARTER COLONNA	POST CASING
B2807XX		CARTER SUPERIORE COLONNA	POST UPPER CASING
B2815	*	FINECORSO SALITA TIPO PIZZATO FR654	ASCENT LIMIT SWITCH TYPE PIZZATO FR654
B2816		PERNO PULEGGIA L = 240 MM.	PULLEY PIN L=240MM.
B2817		DISTANZIALE Ø41X57X35	SHIM Ø41X57X35
B2818		DISTANZIALE Ø41X57X72	SHIM Ø41X57X72
B2819		LAMA FERMO PERNO PULEGGIA	PULLEY PIN STOPPING PLATE
B2820		MARTELLETTO DI SICUREZZA CARRELLO COLONNA L.O.	L.O. POST CARRIAGE SAFETY WEDGE
B2821		MOLLA RICHIAMO	RETURN SPRING
B2822		MOLLA RICHIAMO MARTELLETTO CARRELLO COLONNA L.O.	L.O. POST CARRIAGE SPRING FOR RETURN OF SAFETY WEDGE
B2823		TIRANTE RICHIAMO MARTELLETTO CARRELLO COLONNA L.O.	L.O. POST CARRIAGE CABLE FOR RETURN OF SAFETY WEDGE
B2824		VITE TE M6X50 8.8 PF UNI 5737 ZB	SCREW 6X50 8.8
B2825		RULLO SUPERIORE Ø80X38 + BRONZINA	TOP ROLLER Ø80X38 + BUSHING
B2828		PATTINO LATERALE CARRELLO	CARRIAGE LATERAL RUNNER
B2830		RULLO INFERIORE Ø80X30 + BRONZINA	DOWN ROLLER Ø80X30 + BUSHING

B2831		VITE TSCE 90° M6X14 UNI 5933	SCREW TSCE M6X14 UNI 5933
B2837		PERNO PULEGGIA L = 60 MM.	PULLEY PIN L=60MM.
B2838		LAMA FERMAPERNO PULEGGIA	PULLEY PIN STOPPING PLATE
B2839		PULEGGIA INFERIORE COLONNE Ø230X29 + BRONZINA	POST LOWER PULLEY Ø230X29 + BUSHING
B2843		MICROINTERRUTTORE TIPO PIZZATO FR 1454	MICROSWITCH TYPE PIZZATO FR 1454
B2844		MOLLA RICHIAMO SENSORE FUNE	CABLE SENSOR RETURN SPRING
B2845		SENSORE FUNE	CABLE SENSOR
B2846		PULEGGIA Ø50 X SENSORE FUNE	PULLEY Ø50 X CABLE SENSOR
B2847		DADO BLOCK B. M10 UNI 7474	SELF-LOCKING NUT M10 UNI 7474
B2848		SENSORE FUNE COMPLETO	COMPLETE CABLE SENSOR
B2849		VITE TE M16X20 UNI 5739	SCREW TE M16X20 UNI 5739
B2851		VITE TE M12X65 PF 10.9 UNI 5737	SCREW TE M12X65 PF 10.9 UNI 5737
B2852		DADOBK BASSO M12 6S. UNI 7474	SELF-LOCKING NUT M12
B2853		PERNO ATTACCO CATENA / PETTINE	CHAIN / COMB CONNECTING PIN
B2854		COPPIGLIA Ø2X20 UNI 1336	SPLIT PIN Ø2X20 UNI 1336
B2855		CATENA TIPO FLEYER AL 866 1"	CHAINE TYPE FLEYER AL 866 1"
B2856		RULLO PER CATENA + BRONZINA	CHAIN ROLLER + BUSHING
B2857		PERNO RULLO PER CATENA	ROLLER PIN FOR CHAIN
B2859		SUPPORTO RULLO PER CATENA	ROLLER SUPPORT FOR CHAIN
B2860		CARTER RINVIO CAVO ELETTRICO	ELECTRIC CABLE GUIDE CASING
B2861		CAVO ELETTRICO	ELECTRIC CABLE
B2862		MOLLA RICHIAMO TIRANTE MARTELLETTO CARRELLO COLONNA L.C.	L.C. POST CARRIAGE SPRING FOR RETURN OF SAFETY WEDGE
B2863		TIRANTE RICHIAMO MARTELLETTO CARRELLO COLONNA L.C.	L.C. POST CARRIAGE CABLE FOR RETURN OF SAFETY WEDGE
B2864		TIRANTE AZIONAMENTO ELETTROMAGNETE	MAGNET OPERATING CABLE
B2865		MARTELLETTO DI SICUREZZA CARRELLO COLONNA L.C.	SAFETY WEDGE FOR L.C. POST CARRIAGE
B2866		DISTANZIALE PER MARTELLETTO CARRELLO COLONNA L.C.	L.C. POST CARRIAGE SPACER FOR SAFETY WEDGE
B2868	*	ELETTROMAGNETE TT6	MAGNET TYPE WARNER TT6
B2870		MORSETTIERA COMPLETA TRIFASE	3PHASE BOX BOARD
B2871		TRASFORMATORE 0-230-400 / 24 75 VA TIPO C.E.	TRANSFORMER 0-380-415 / 24 75 VA TYPE C.E.
B2872		QUADRO COMANDI COMPLETO MONOFASE	ELECTRIC CONTROL BOX ASSEMBLY SINGLE-PHASE
B2873		MORSETTIERA COMPLETA MONOFASE	SINGLE PHASE BOX BOARD
B2876		PETTINE ATTACCO CATENA - CARRELLO	CONNECTING CHAIN - CARRIAGE COMB
B2877		PETTINE ATTACCO CATENA - CILINDRO	CONNECTING CHAIN - CYLINDER COMB
B2880		CANNA CILINDRO	CYLINDER TUBE
B2886		TUBO FLESS. MANDATA OLIO	OIL DELIVERY HOSE
B2916		FUNE Ø11 L = 8480 MM.	CABLE Ø11 L=8480MM.
B2918XX		CARRELLO L.C.	COMAND POST CARRIAGE
B2919XX		CARRELLO L.O.	FREE POST CARRIAGE
B2920XX		CARTER RAMPA DI BASE	BASE COVER PLATE CASING
B2923XX		BRACCIO CORTO SX	LEFT SHORT ARM
B2924XX		BRACCIO CORTO DX	RIGHT SHORT ARM
B2927		PERNO RULLO SUPERIORE	TOP ROLLER PIN
B2933XX		BRACCIO LUNGO DX	RIGHT LONG ARM
B2934XX		BRACCIO LUNGO SX	LEFT LONG ARM
B2936XX		BASAMENTO	BASE
B2946		SALVAPIEDE BRACCI	ARMS FOOT GUARDS
B2948		CILINDRO IDRAULICO COMPLETO/ 06	COMPLETE HYDRAULIC CYLINDER

B2949	*	KIT GUARNIZIONI CILINDRO/06	CYLINDER GASKETS KIT
B2950		STELO CILINDRO/06	CYLINDER ROD
B2951		TESTATA CILINDRO/06	CYLINDER HEAD
B5008		RONDELLA P 21X37X3 UNI 6592	WASHER Ø21X37X3 UNI 6592
B5009		DADO M20 UNI 5588	NUT M20 UNI 5588
B5020		VITE TE M12X25 UNI 5739	SCREW TE M12X25 UNI 5739
B5033		LAMA FERMAPERNO	PIN STOPPING PLATE
B5034		VITE TSPEI M8X12 UNI 5933	SCREW TSPEI M8X12 UNI 5933
B5047		RONDELLA TENUTA CON GUARNIZIONE 1/4"	GASKET WITH 1/4" SEAL
B5049		PROLUNGA M-F 1/4"	SPACER
B5053	*	VITE FORATA 1/4	SCREW 1/4
B5062	*	KIT VALVOLA BLOCCA CILINDRO	CYLINDER SAFETY VALVE ASSEMBLY
B5076		PATTINO LATERALE Ø35X17	SIDE SLIDING PAD Ø35X17
B5085		DADOBK BASSO M 6 6S. UNI 7474	SELF-LOCKING NUT M6
B5088		DADO BLOK M8 UNI 7474	NUT M8 UNI 7474
B5253		PASSACAPO GEWISS PG 13,5	CABLE CLAMP GEWISS PG13,5
B5289	*	FUSIBILE 10X38 1A aM	FUSE 10X38 1A aM
B5290	*	FUSIBILE 10X38 6A aM	FUSE 10X38 6A aM
B5301		RALLA A/S 30x47x1	FIFTH WHEEL
B5386		VALVOLA CE1-NC-EM	VALVE
B5395		KIT FISSAGGIO SERBATOI IN PVC	TANK FASTENING KIT
B5406		COLLETORE KE2000 80-250BAR	BODY HYDRAULIC POWER
B5418		BOBINA 24V 50/60HZ+CONNETTORE	COIL
B5419		TAPPO X PIOMBATURA VM15	PLUG
B5425		FILTRO ASPIRAZIONE 3/8"	AIR FILTER
B5428		RONDELLA GROWER 8,4 UNI1751 ZB	WASHER
B5429		TAPPO DIN 908 1/4+RONDELL.RAME	PLUG
B5431		TUBO DI SCARICO M12X1 L=300	DRAIN PIPE
B5432		TUBO ASPIRAZ.VERTIC.L=240	SUCTION PIPE
B5433		SERBAT.L9 PVC NERO CENTR.K3	TANK
B5434		TAPPO TC4 X VALV.3/4"-16UNF	PLUG
B5435		VALVOLA STF14P 9L/MIN	VALVE
B5436		POMPA 18 10A5X348N 5CC/REV	PUMP
B5437		VITE TCCE M8X100 UNI 5931 ZB	SCREW
B5442		VALVOLA DI MASSIMA15 80-250BAR	MAX. PRESSURE VALVE
B5453	*	ELETTRVALVOLA COMPLETA	COMPLETE ELECTRO-VALVE
B5491		GIUNTO POMPA K3	CONNECTING PUMP K3
B5654	*	PULSANTE NERO + 1 CONTATTO N.O.	BLACK PUSH-BUTTON + 1 N.O. CONTACT
B5655	*	PULSANTE NERO + 2 CONTATTI N.O.	BLACK PUSH-BUTTON + 2 N.O. CONTACTS
B5656	*	PULSANTE GRIGIO + 1 CONTATTO N.O.	GREY PUSH-BUTTON + 1 N.O. CONTACT
B5671		INTERRUTTORE GENERALE	MASTER SWITCH ASSEMBLY
B5943		COPRIMORSETTIERA MOTORE	MOTOR TERMINAL BOARD COVER
B5945		COPRIVENTOLA MOTORE	MOTOR AIR-CONVEYOR
B6021		KIT STAFFA SUPPORTO	SUPPORT BRACKER KIT
B6078		CENTRAL.K3 230-400/50T 2,2KW 4COL	GEARCASE
B6080		CENTRAL.K3 230/50M 2,2KW 4COL	GEARCASE
B6091		TAPPO SERBATOIO	TANK PLUG
B6500		CASSETTA PLASTICA MOD.GEWISS 44208	ELECTRIC BOX MOD. GEWISS 44208
B6503		PIASTRA PER CASSETTA MOD. 44616	PLATE GEWISS 44616
B6511		PORTAFUSIBILE 10X38 WIMEX PCH1	FUSE CARRIER 10X38 WIMEX PCH10X38
B6513		PASSACAPO GEWISS PG 9	CABLE CLAMP GEWISS PG9
B6514		PASSACAPO GEWISS PG11	CABLE CLAMP GEWISS PG11
B6522		MORSETTO SPRECHER VU4-4	TERMINAL SPRECHER VU4-4
B6525		MORSETTO SPRECHER VUPE4-4	TERMINAL SPRECHER VUPE4-4
B6538		MORSETTO SPRECHER VU 4-6	TERMINAL SPRECHER VU4-6

B6539		MORSETTO SPRECHER VUPE 4-6	TERMINAL SPRECHER VUPE4-6
B6546		CONNETTORE ELETTROMAGNETE	ELECTROMAGNET CONNECTOR
B6590		MOTORE TRIFASE 230/400V 50HZ 2,2KWV-K3	MOTOR 3PHASE 230/400V 50HZ 2,2KW-K3
B6591		MOTORE B14 MN 230V 50HZ 2,2KW-K3	MOTOR B14 SINGLE PHASE 230V 50HZ 2,2KW-K3
B6612		CENTRAL.K3 4 COLONNE	GEARCASE
B6696		VALVOLA DI RITEGNO 3/8" KE 2009	CHECK VALVE
C0062		RONDELLA Ø10,5X21 UNI 6592	WASHER Ø10,5X21 UNI 6592
C0099		VITE TE 6X20 8.8 UNI 5739	SCREW M6X20 - 8.8
C0100		RONDELLA Ø8,4X17 UNI 6592	WASHER Ø8,4X17 UNI 6592
C0120		RONDELLA Ø9X24 UNI 6593	WASHER Ø9X24 UNI 6593
R0311		VITE TCEI M5X30 UNI 5931	SCREW TCEI 5X30 UNI 5931
R2497		ANELLO SEEGER E16 UNI 7435	RETAINING RING E16 UNI 7435
Z_ZCONS		* = RICAMBI CONSIGLIATI	* = RECOMMENDED SPARE PARTS



Dichiarazione di conformità - Déclaration de conformité
 Declaration of Conformity - Konformitätserklärung
 Declaración de conformidad - Overensstemmelseserklæring
 Överensstämmande intyg - EG-Conformiteitsverklaring



WERTHER INTERNATIONAL S.p.A.
 Via F.Brunelleschi, 12 42124 CADE' (Reggio Emilia) Italy
 Tel.++/+522/9431 (r.a.) Fax ++/+522/941997

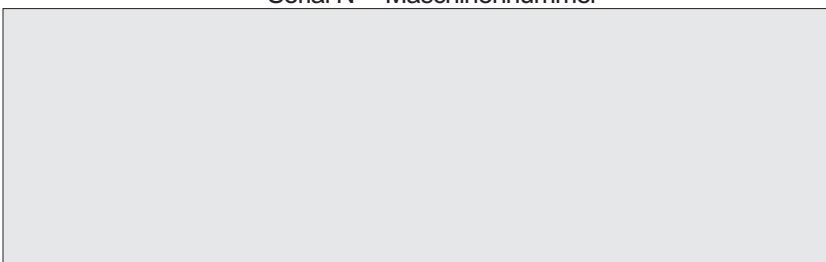
<i>dichiariamo che il ponte sollevatore modello</i>	<i>declara, que l'elevador modelo</i>
<i>déclare que le pont elevateur modèle</i>	<i>Vi erklærer hermed, at autoløfter model</i>
<i>hereby we declare that the lift model</i>	<i>Vi förklarar härmed att billyft model</i>
<i>hiermit erklären wir, daß die Hebebühne Type</i>	<i>verklaren hiermee, dat</i>

511C

I	è stato costruito in conformità alle direttive 2004/108/CE - 2006/42/CE - 2006/95/CE e EN1493	ha sido fabricado según las directivas 2004/108/CE - 2006/42/CE - 2006/95/CE y EN1493	E
F	a été construite en conformité avec les directives 2004/108/CE - 2006/42/CE - 2006/95/CE et EN1493	er fremstillet i overensstemmelse med bestemmelserne i 2004/108/EØF - 2006/42/EØF - 2006/95/EØF- EN1493	DK
GB	has been manufactured in conformity with the directives 2004/108/CE - 2006/42/CE - 2006/95/CE and EN1493	är framställt i överensstämmelse med bestämmelser i RÅDETS DIREKTIV 2004/108/CE - 2006/42/CE - 2006/95/CE - EN1493	S
D	in Übereinstimmung mit den Richtlinien 2004/108/CE - 2006/42/CE - 2006/95/CE und EN1493 hergestellt worden ist.	Producten zijn gefabriceerd in overeenstemming met de richtlijn 2004/108/CE - 2006/42/CE - 2006/95/CE en de daarop volgende veranderingen en aanvullingen en EN1493	NL

Matricola N° - N° de série -
 Serial N° - Maschinenummer

Fascicolo tecnico - Dossier technique
 Technical file - Techn. Dokumentation



WERTHER INTERNATIONAL S.p.A.
 Via F.Brunelleschi, 12
 42124 CADE' (Reggio Emilia) Italy

Ente certificatore - Organisme certificateur
 Notified body - Prüfsinstitut

CE0044 TÜV
TUV NORD CERT GMBH
45141 ESSEN GERMANY